



az Single Shaft Shredder SERIES

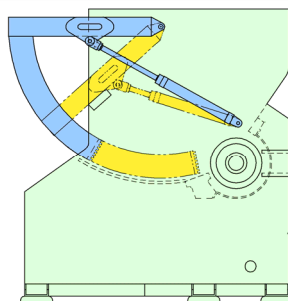


Single Shaft Shredder AZ series is focus on dealing with complex waste. Despite the soft/hard plastic, leather, cloth, paper, domestic electronic, wood, and building waste evenly simplify shredding. The rotor design is like an eagle claw as precision to catch the waste. AZ co-ordinate is hereby oil pressure to push the waste in machinery. In granulated, the sieve is rapidly changing and adjusted.

pulian
PARTNER FOR THE EXPERTS

AZ Single Shaft Shredder SERIES

單軸爆破 AZ 系列，是專門處理複雜性粉碎物，不管是軟硬塑料、皮革、布、紙、電器、建材、木材…等均能輕易破碎。而刀軸設計就像鷹爪般精準抓住破碎物，再配合油壓推料機構，完全顯現它無所不能的特性，在粒度方面，配合可換式篩網，可立即調整。是一款全新的機器。

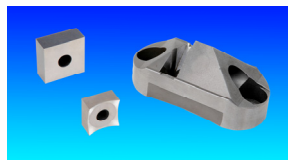


Feature

- (1) Huge waste is not necessary to pre-processing, shredding directly.
- (2) Granulated size is adjustable at any time.
- (3) Safety reverse installed for overload.
- (4) Blade can be used in both ends replacing is easy.
- (5) Oil pressure to push the waste to machinery design , complex waste easy shredding.

特點

- (1) 大型廢棄物不需前處理可直接破碎。
- (2) 粒度大小可隨時調整。
- (3) 過載後反轉裝置。
- (4) 刀具可正反面使用，且換刀容易。
- (5) 油壓推料機構設計，複雜性之破碎物，能輕易破碎。



MODEL	機型	AZ-750		AZ-1000		AZ-1400	
Power	馬力(HP)	20HP 6P		30HP 6P		40HP 6P	
Oil Pressure Power	油壓馬達(HP)	3		3		5	
Evacuation	排料馬力(HP)	2		2		2	
Rotating Diameter	迴轉直徑(mm)	Φ415		Φ415		Φ415	
Shaft Diameter	轉軸直徑(mm)	Φ350		Φ350		Φ350	
R.P.M	轉速(rpm)	95		95		95	
Rotary Size	迴轉刀尺寸(mm)	48x48	34x34	48x48	34x34	48x48	34x34
Rotary Cutter	迴轉刀數(pcs)	26	36	34	50	48	68
Stationary Cutter	固定刀數(pcs)	1		1		1	
Machine Weight	機械重量(kg)	1900		2500		2800	
Machine Size	機械尺寸(mm)	2200x1630x2000		2200x1880x2000		2200x2280x2000	
Capacity	工作量(kg/hr)	600~800		800~1000		900~1200	
Sieve Size	篩網尺寸 mm(in)	Φ50		Φ50		Φ50	